

	Q bio m3 / Tag	Q min l / s	Q max l / s
Mittelwert	17'619		
20%-Wert	10'880	75	353
50%-Wert	14'388	92	417
80%-Wert	22'928	153	528
Q tw ¹⁾	12'634	84	385
2 Q tw			770

1) Mittel aus 20% und 50%-Wert

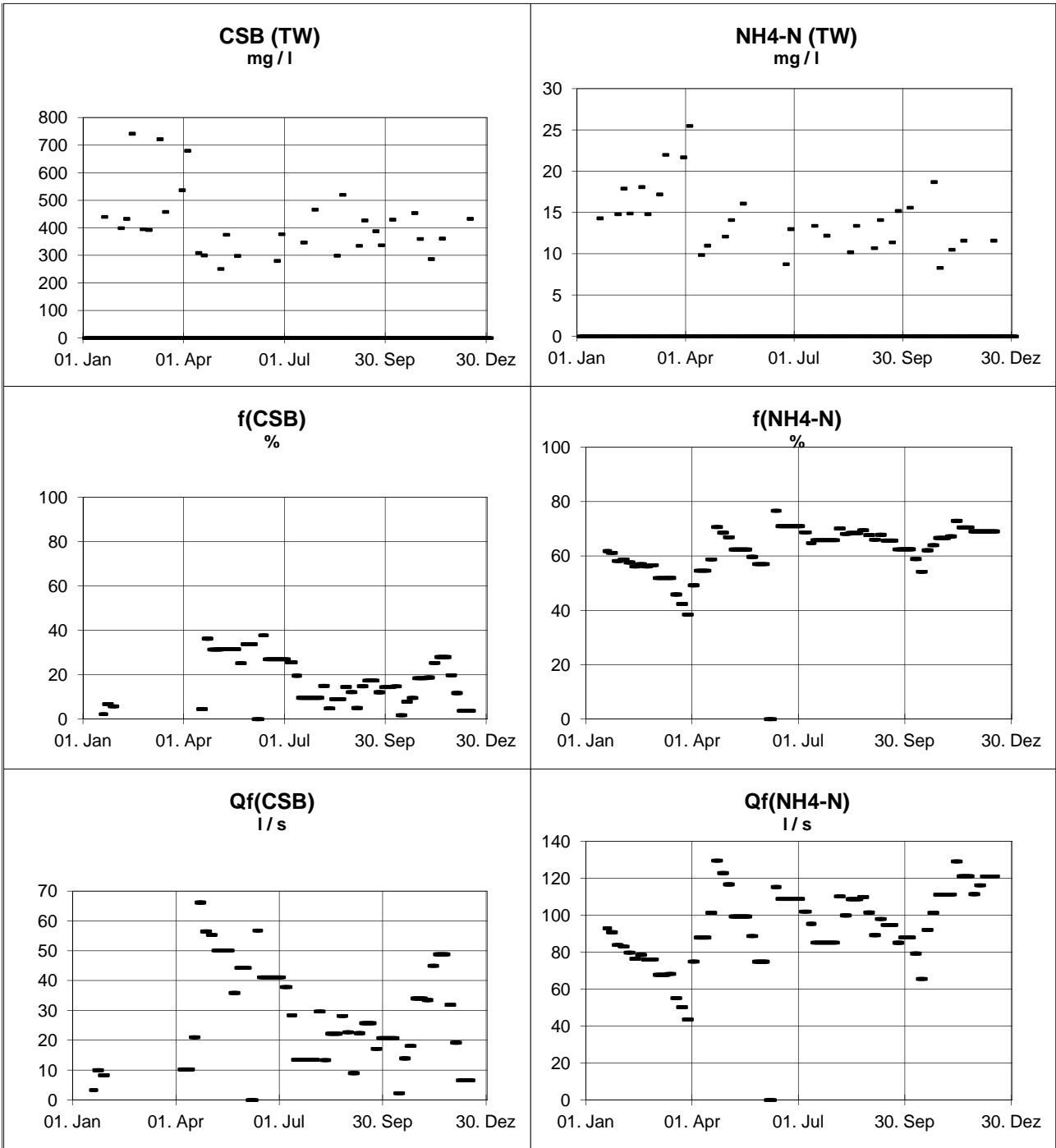
Fremdwasseranteil 32 %

siehe Seite 2

	Tagesmittelwerte	
	m3 / d	l / s
Q tw	12'634	146
Q fremd ²⁾	4'022	47
Q schmutz ³⁾	8'612	100

²⁾ = Q tw * Fremdwasseranteil / 100

³⁾ = Q tw - Q fremd



Vorgaben:

Q schmutz	200	l/EW*Tag
CSB	90	g/EW*Tag
NH4-N	7.5	g/EW*Tag
K soll (CSB)	450	mg / l
K soll (NH4-N)	37.5	mg / l

K soll: erwartete Konzentration im Zulauf, wenn nur Schmutzwasser zuläuft!

Schätzung aus EW biochemisch

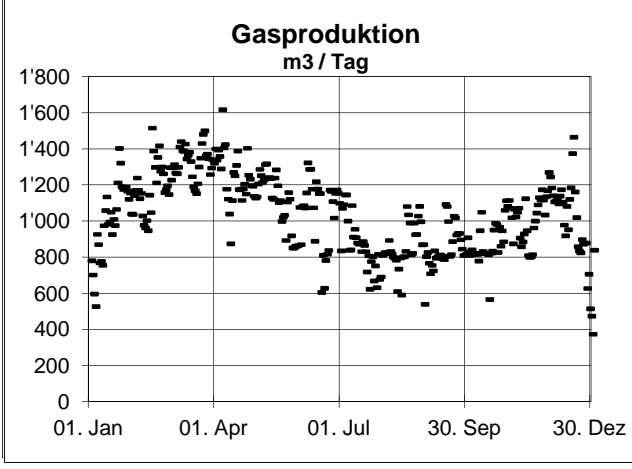
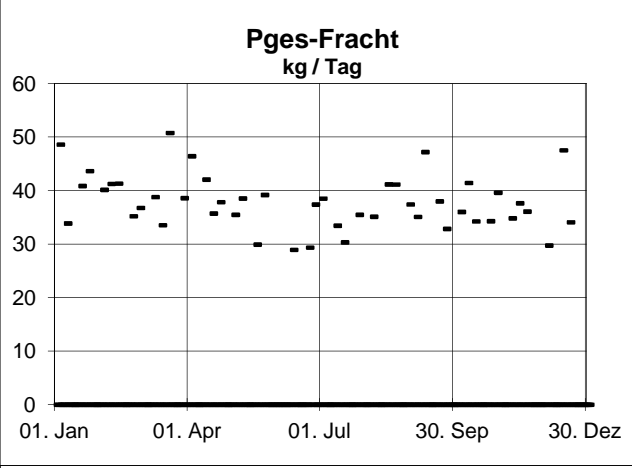
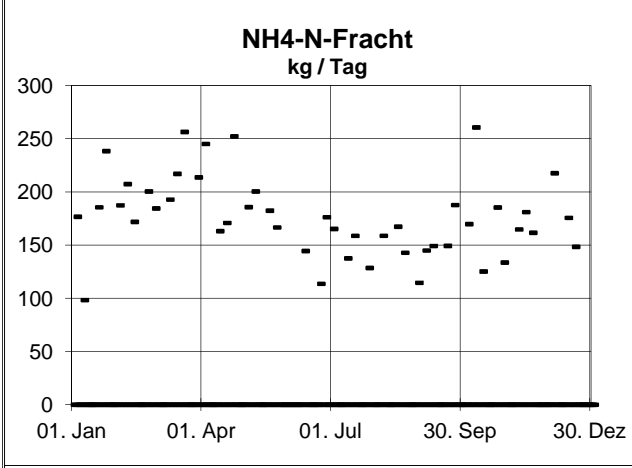
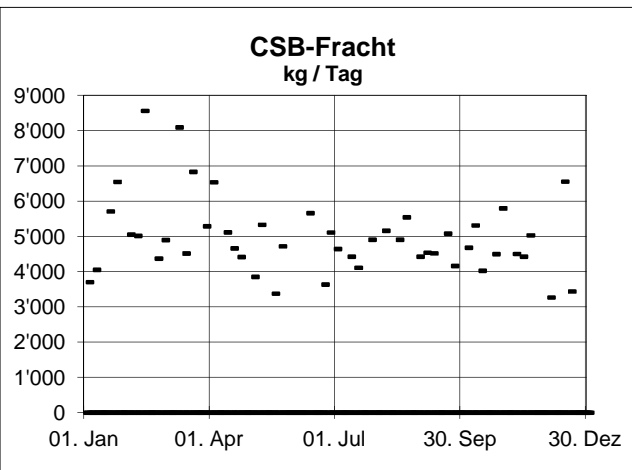
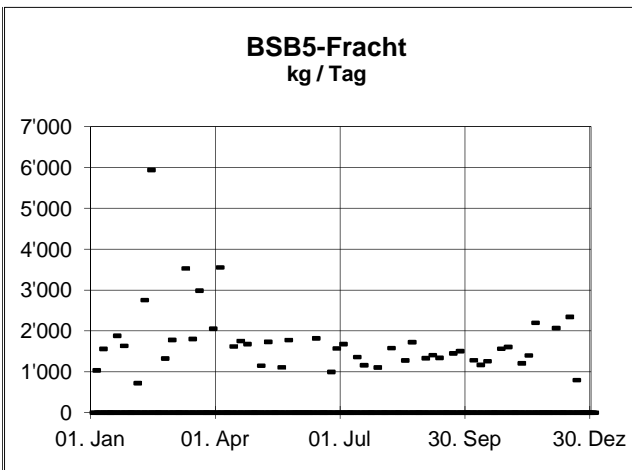
Q tw	12'634	m3 / Tag
Q schmutz (EW) ¹⁾	9'400	m3 / Tag
Q fremd (EW)	3'234	m3 / Tag
f (EW)	26	%

¹⁾ 200 l / EW * Tag

Schätzung aus den Zulaufkonzentrationen:

f(CSB) Jahresmittel	8	%
f(NH4-N) Jahresmittel	62	%

f Mittelwert	32	%
f gewählt	32	%



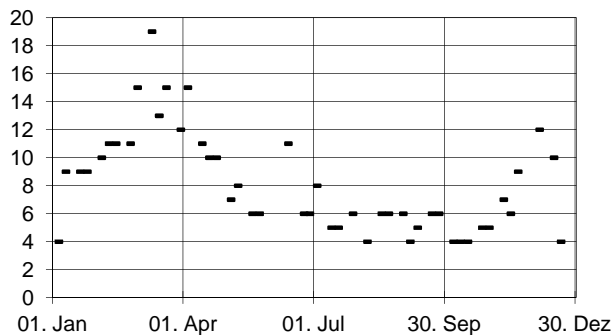
EZ angeschlossen	18'500
EW biochem. gewählt	47'000
EW biochem. 80%-Wert	51'000
EW Stickstoff	23'000
EW Phosphor	24'000

<u>Zulauffrachten</u>	BSB5 kg/Tag	CSB kg/Tag	NH4-N kg/Tag	Pges kg/Tag	Gasp. m3/Tag	FS kg/Tag
Mittelwert	1'738	4'958	176	38	1'029	2'944
50%-Wert	1'572	4'720	172	37	1'039	
80%-Wert	1'870	5'501	200	41	1'214	

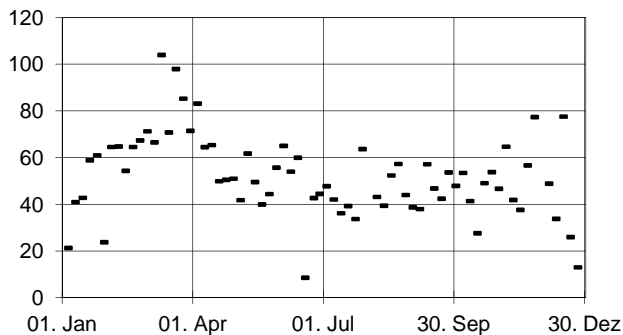
spezifische Belastung pro EW	g / Tag	g / Tag	g / Tag	g / Tag	Probenahmeort: Rohzulauf	l / Tag	g / Tag
	45	90	7.5	1.6		30	85

<u>Einwohnerwerte</u>	BSB5 EW	CSB EW	NH4-N EW	Pges EW	Mittelwerte EW	Gasp. EW	FS EW
Mittelwert	38'624	55'093	23'434	23'612	35'191	34'315	34'640
50%-Wert	34'944	52'439	22'926	23'386	33'424	34'633	
80%-Wert	41'549	61'120	26'725	25'773	38'792	40'467	

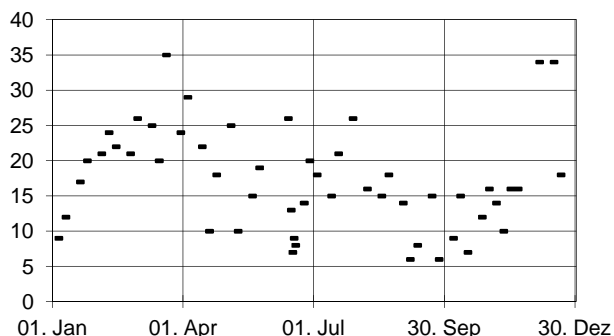
BSB5
mg/l



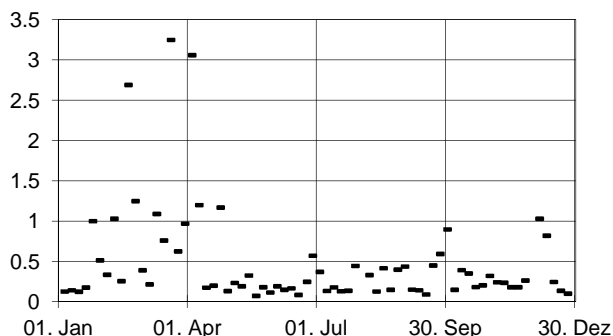
CSB
mg/l



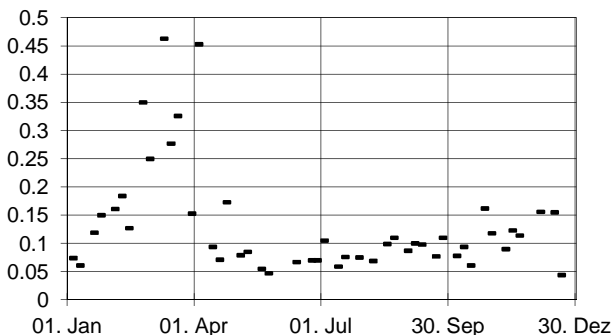
GUS
mg/l



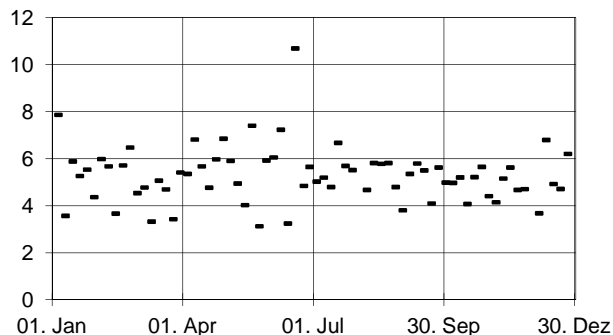
NH4-N
mg/l



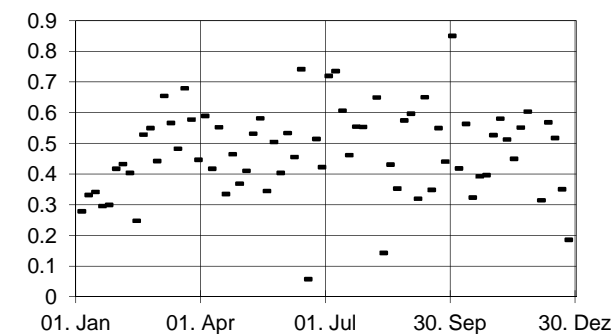
NO2-N
mg/l



NO3-N
mg/l

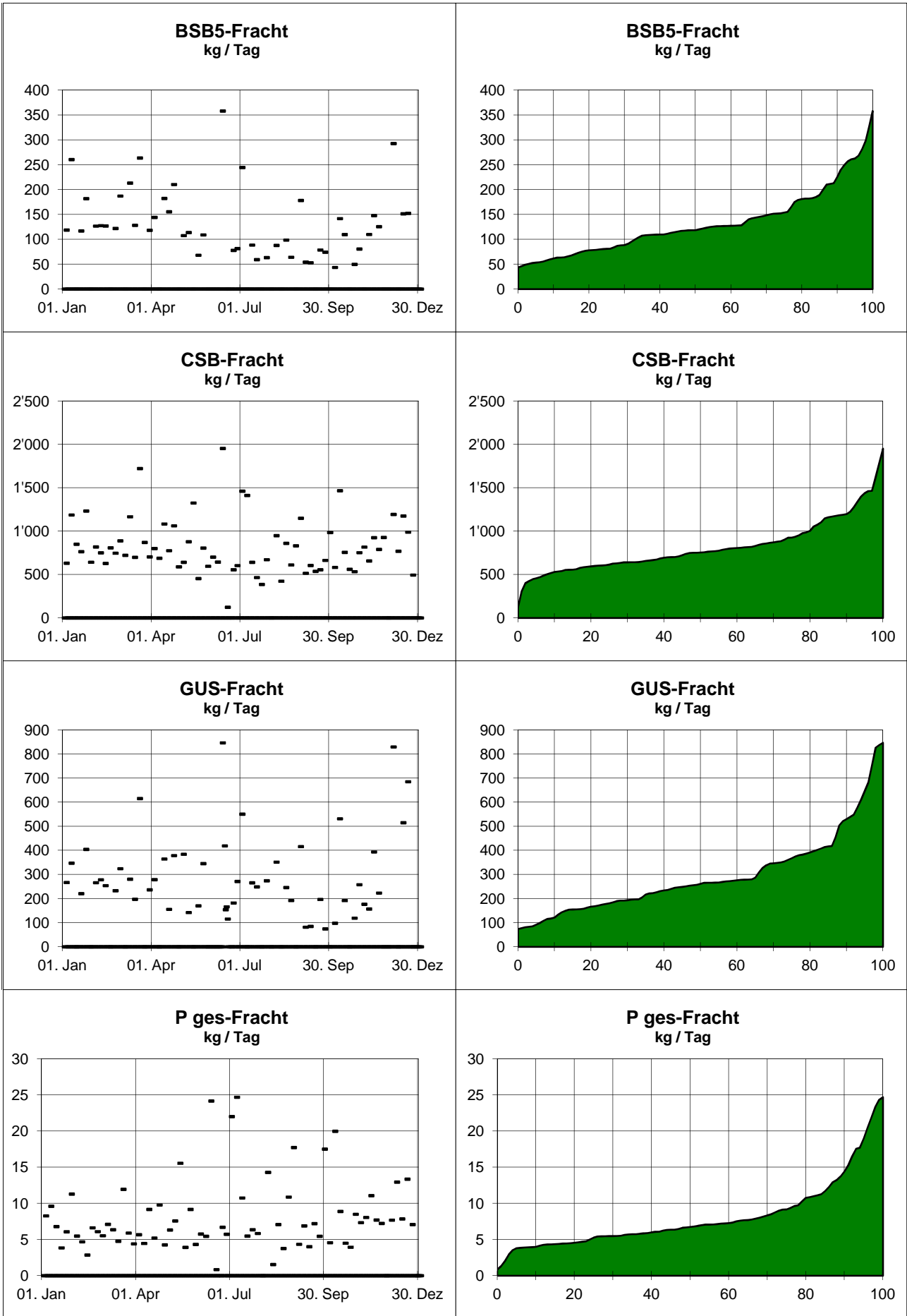


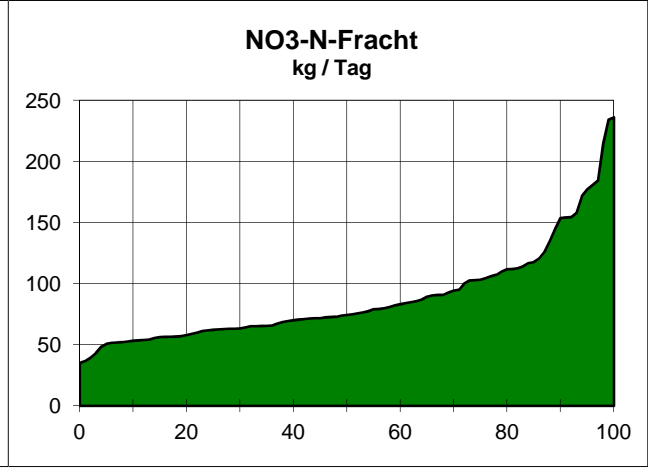
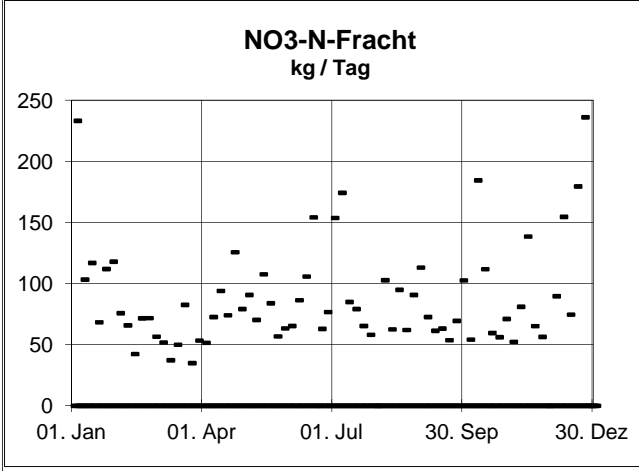
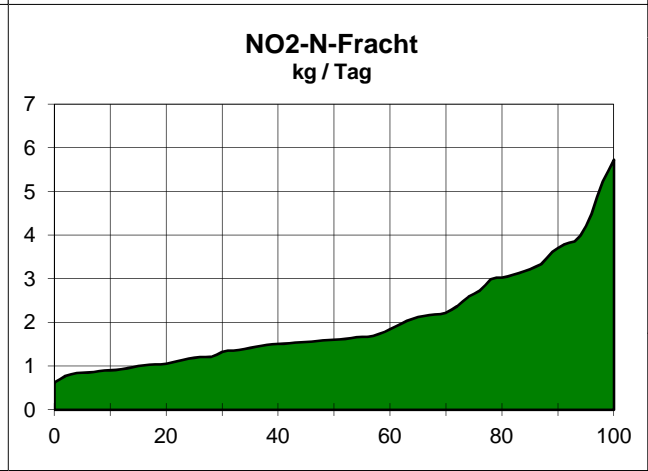
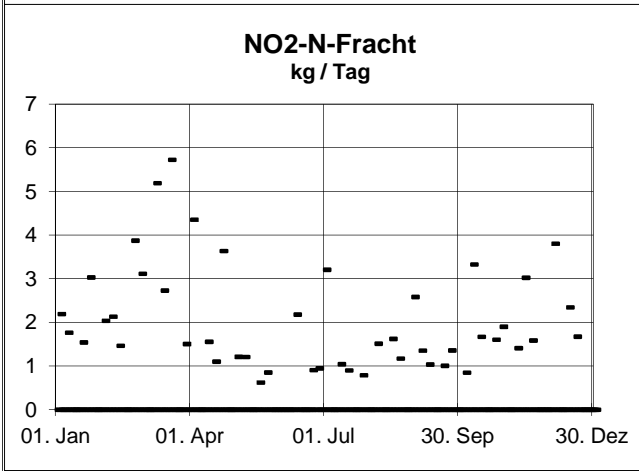
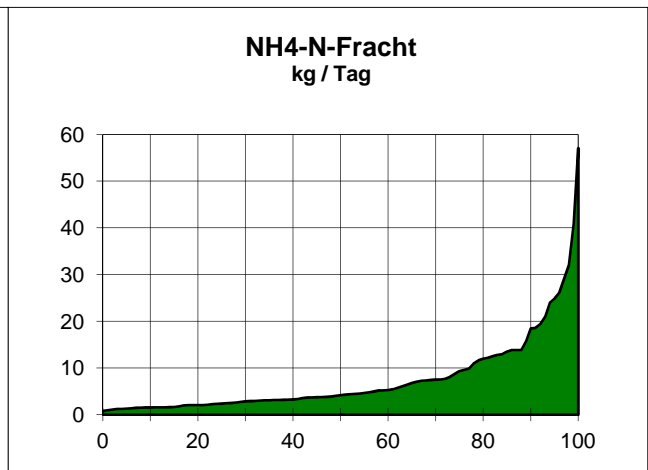
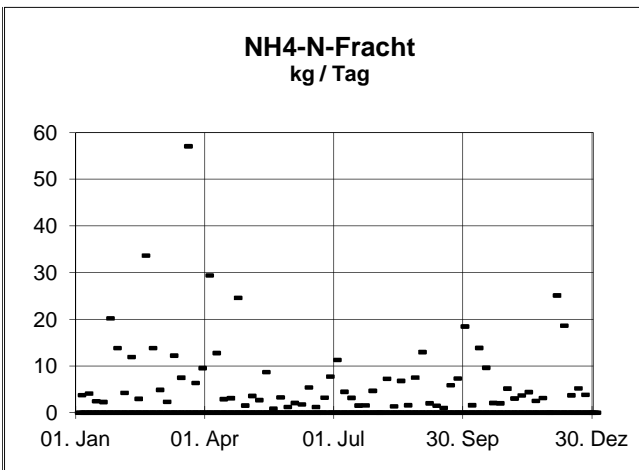
P ges
mg/l



Angaben in mg/l	Mittel- wert	90%- Wert	Grenz- wert ¹⁾
BSB5	8.1	12.4	15
CSB	52.0	71.3	
GUS	17.3	26.0	15
NH4-N	0.5	1.0	2
NO2-N	0.1	0.3	0.3
NO3-N	5.3	6.7	
P ges	0.47	0.65	0.8

¹⁾ nach GSchV vom 28. Oktober 1998
CSB: Richtwert





Auslauffrachten:

Angaben in kg/Tag	Mittel- wert	50%- Wert	80%- Wert	Mittel 5 - 95 %
BSB5	133	119	181	127
CSB	817	754	1'004	796
GUS	297	262	392	280
NH4-N	7.7	4.2	12.0	6.3
NO2-N	2.0	1.6	3.0	1.9
NO3-N	88.5	74.4	111.8	84.3
P ges	8.1	6.7	10.8	7.6

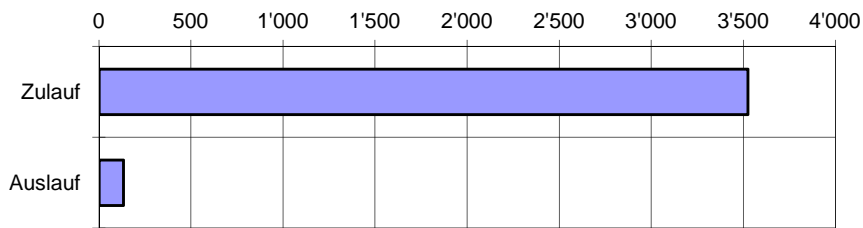
Abbauleistungen:

	EW gewählt	Spez. B. g / EW	Zulauf kg / Tag	Auslauf kg / Tag	Abbau %	Nitrifika- tion %
BSB5	47'000	75	3'525	133	96	
CSB	47'000	140	6'580	817	88	
N ges				125.5	55	
N Kjel	23'000	12	276.0	34.9		87
NH4-N		7	161.0	7.7		
NO2-N				2.0		
NO3-N				88.5		
N org		5	115.0	27.2		
Pges	24'000	2	48.0	8.1	83	

Auslauf: Summe N im Auslauf
Roh-Zulauf / Auslauf (NH4-N + Norg)

CSB / 30

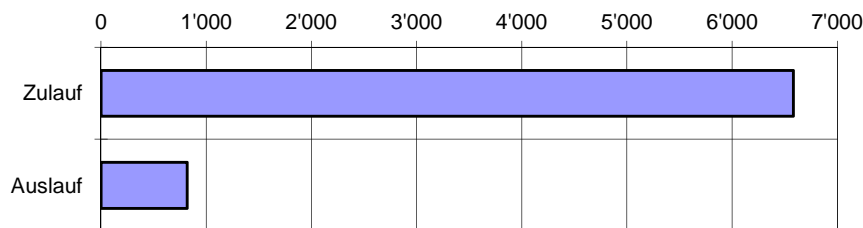
BSB5-Frachten in kg / Tag



BSB5- Abbau

3'392	kg / Tag
96	%
85	%

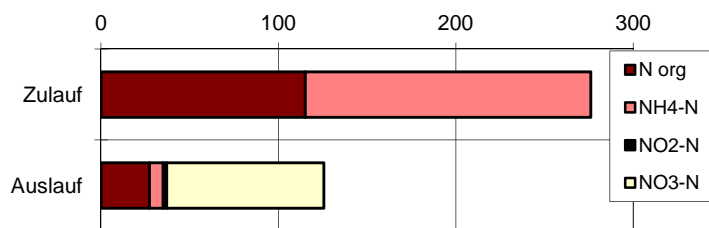
CSB-Frachten in kg / Tag



CSB-Abbau

5'763	kg / Tag
88	%
0	%

Stickstoff-Frachten in kg / Tag



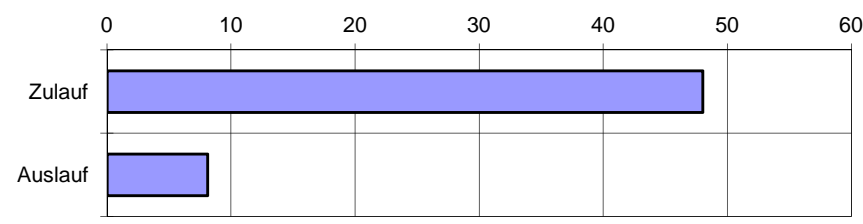
N-Elimination

151	kg / Tag
55	%
30	%

Nitrifikation

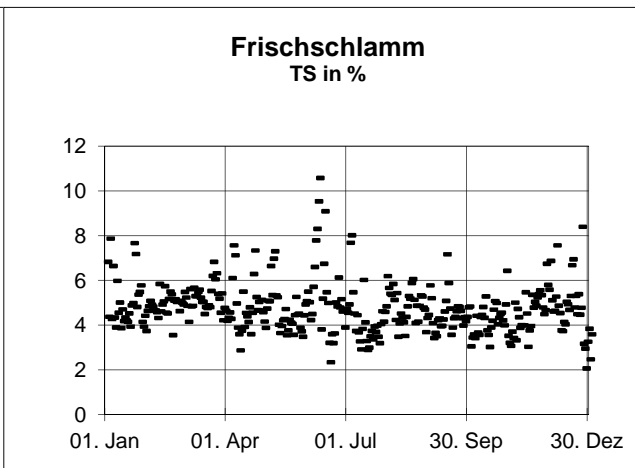
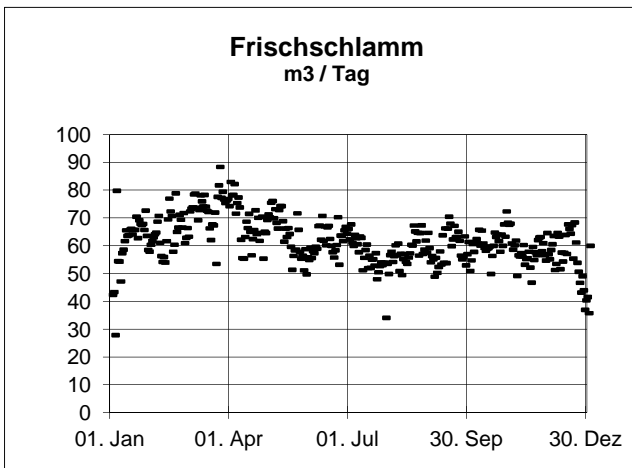
241	kg / Tag
87	%
90	%

Phosphor-Frachten in kg / Tag



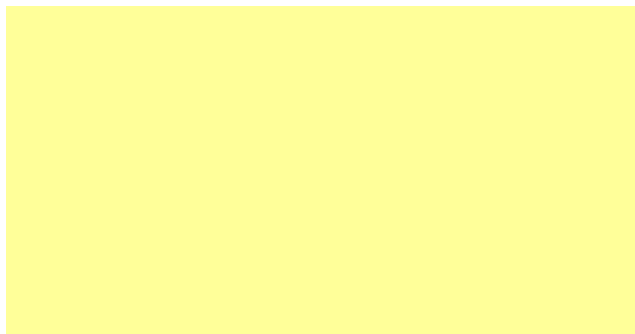
P-Elimination

40	kg / Tag
83	%
80	%



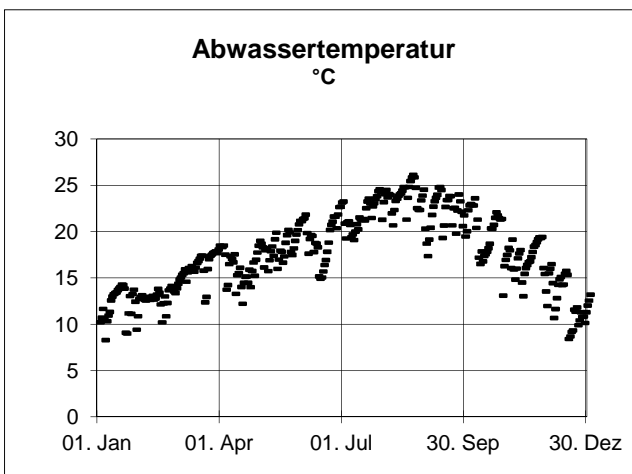
Frishschlammmanfall: Mittelwerte

Frishschl. nass	61.8	m3/Tag
TS-Anteil	4.8	%
Frishschl. in TS	2'944	kg/Tag



Jahresanfall

Frishschl. in TS	1'075	t / Jahr
-------------------------	-------	----------



Abwassertemperatur:

Mittelwert	17.7	°C
20%-Wert	13.7	°C
50%-Wert	17.6	°C
80%-Wert	21.8	°C

Bemerkungen zur Datenauswertung:

